

SECTION I-I

- ALL CONCRETE IS SULPHATE RESISTANT 40 MPA FIBRE REINFORCED
- DIMENSIONS ARE IN INCHES
- TANK WEIGHT: 8275 KGS (18240 LBS)
- MAXIMUM BURIAL DEPTH: 3.05M (10')

PROPRIETARY AND CONFIDENTIAL

THE INFORMATION CONTAINED IN THIS DRAWING IS THE SOLE PROPERTY OF DURACON INDUSTRIES. ANY REPRODUCTION IN PART OR AS A WHOLE WITHOUT THE WRITTEN PERMISSION OF DURACON INDUSTRIES IS PROHIBITED.

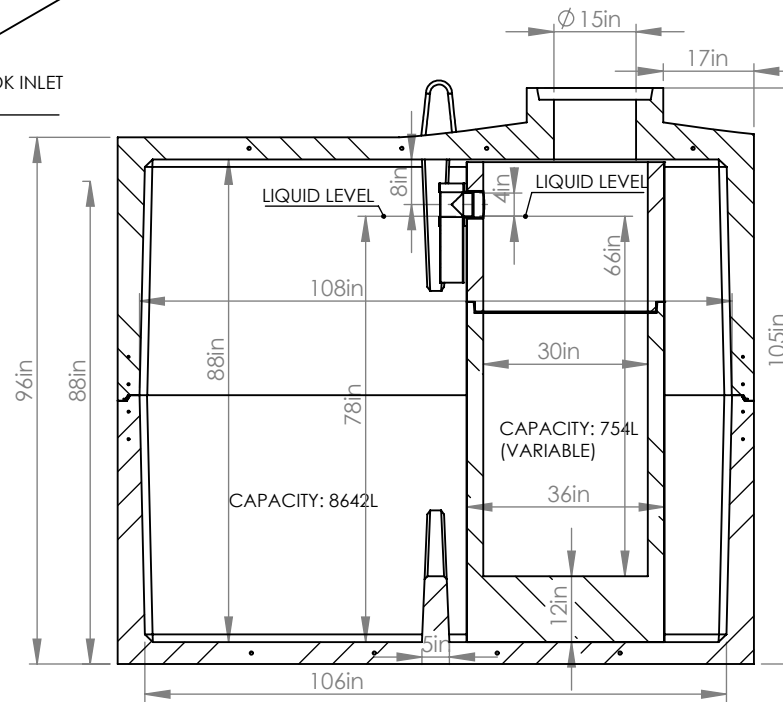
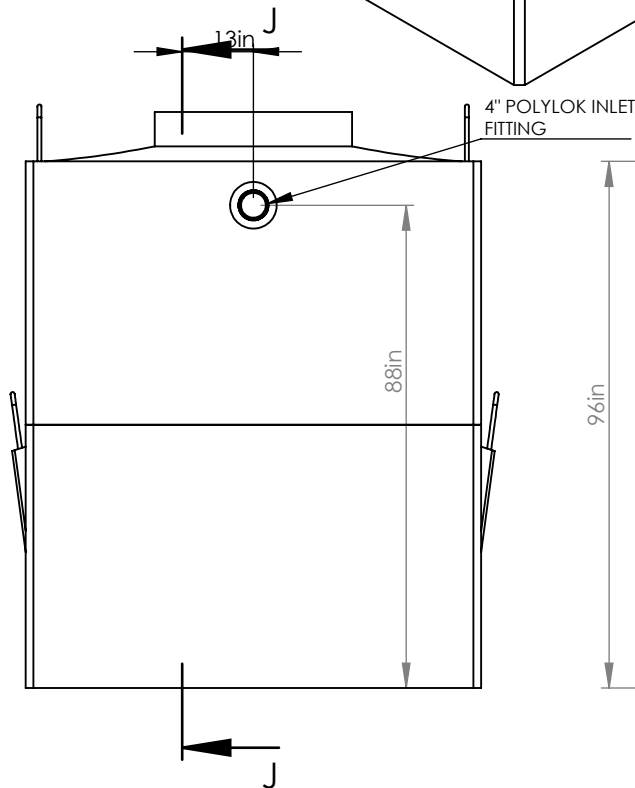
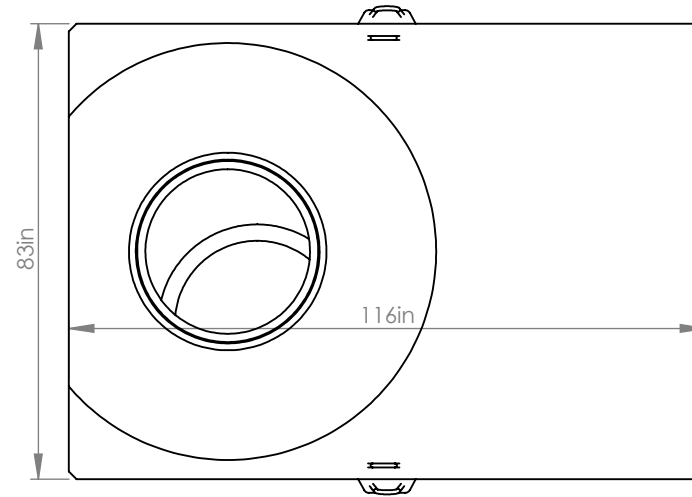
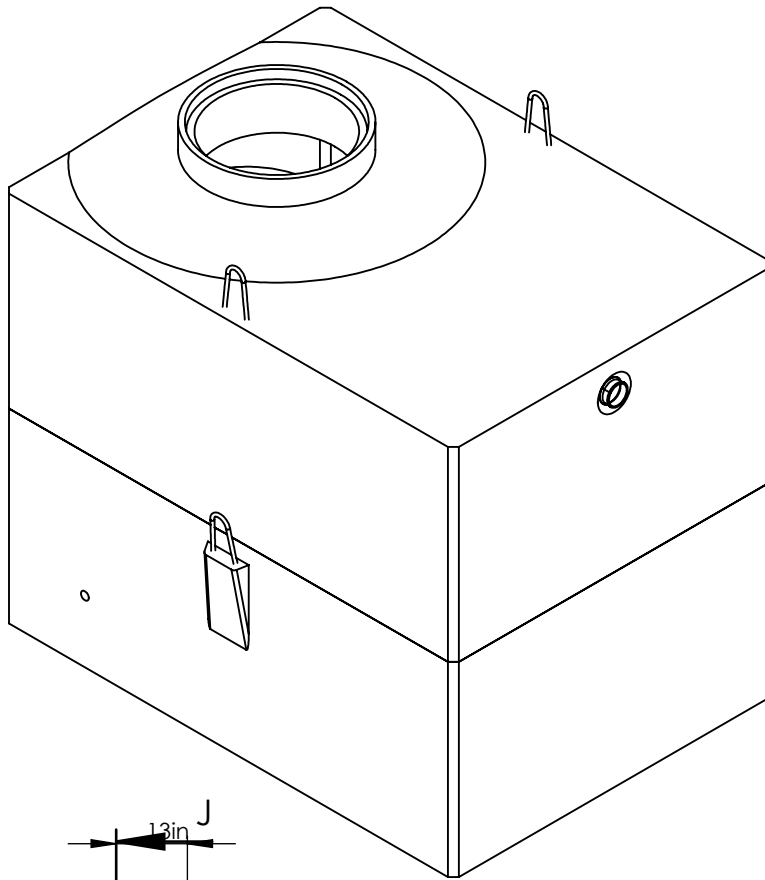


Box 127
Rosenort, MB
R0G 1W0

PH: 204-746-8822
www.duracon.ca

TITLE:

ST2500



SECTION J-J

-ALL CONCRETE IS SULPHATE RESISTANT
 40 MPA FIBRE REINFORCED
 -DIMENSIONS ARE IN INCHES
 -TANK WEIGHT: 8275 KGS (18240 LBS)
 -BURIAL DEPTH: 3.05M (10')

PROPRIETARY AND CONFIDENTIAL

THE INFORMATION CONTAINED IN THIS DRAWING IS THE SOLE PROPERTY OF DURA-CON INDUSTRIES. ANY REPRODUCTION IN PART OR AS A WHOLE WITHOUT THE WRITTEN PERMISSION OF DURA-CON INDUSTRIES IS PROHIBITED.



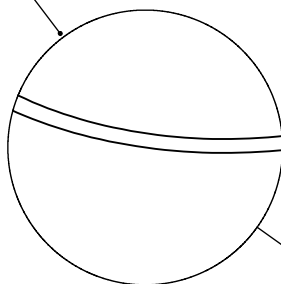
Box 127
 Rosenort, MB
 R0G 1W0

PH: 204-746-8822
 www.duracon.ca

TITLE:

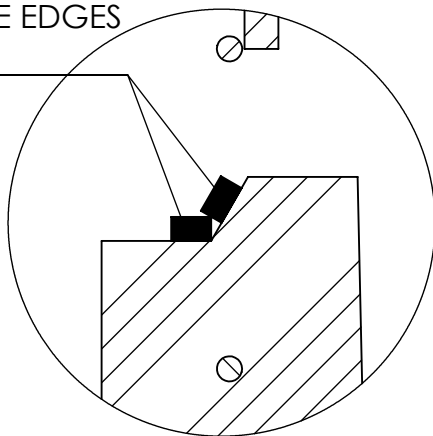
STR2500

PLACE CONSEAL
ON BOTTOM EDGE
OF RISER

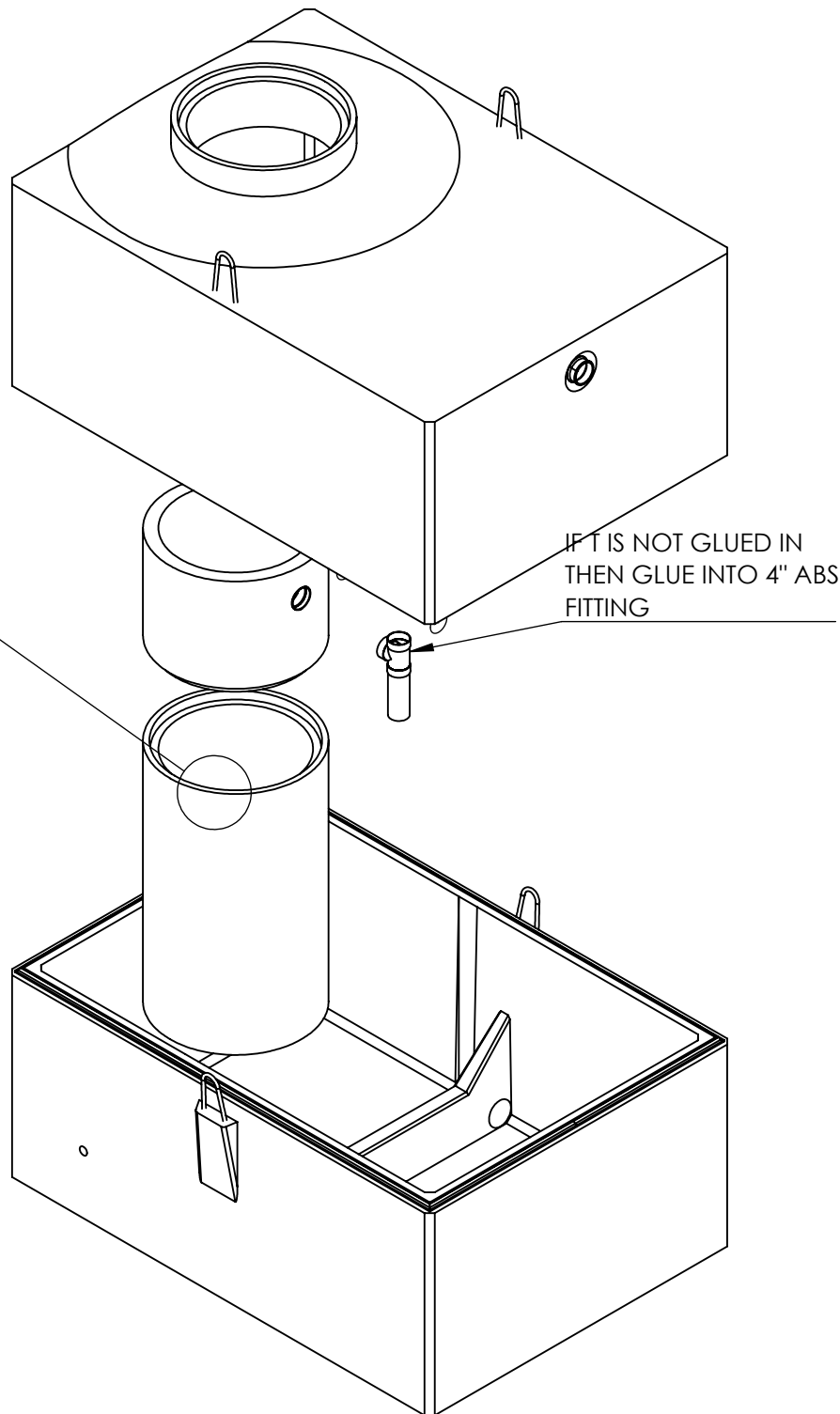


DETAIL E
SCALE 1 : 10

PLACE CONSEAL
ON THESE EDGES
OF TANK



DETAIL H
SCALE 1 : 3



-ALL CONCRETE IS SULPHATE RESISTANT
40 MPA FIBRE REINFORCED
-DIMENSIONS ARE IN INCHES
-TANK WEIGHT: 8275 KGS (18240 LBS)

PROPRIETARY AND CONFIDENTIAL

THE INFORMATION CONTAINED IN THIS DRAWING IS THE SOLE PROPERTY OF
DURACON INDUSTRIES. ANY REPRODUCTION IN PART OR AS A WHOLE WITHOUT THE
WRITTEN PERMISSION OF DURACON INDUSTRIES IS PROHIBITED.



Box 127
Rosenort, MB
R0G 1W0

PH: 204-746-8822
www.duracon.ca

TITLE:

STR2500